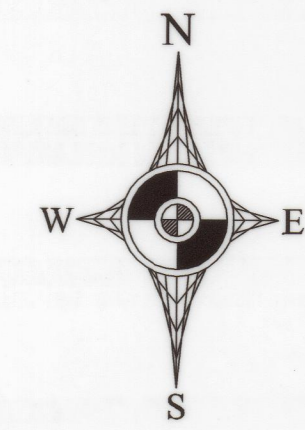


# MARES RUN RANCH

BEING A PORTION OF SECTION 24, TOWNSHIP 2 SOUTH, RANGE 21 EAST BAKER COUNTY, FLORIDA.



GRAPHIC SCALE



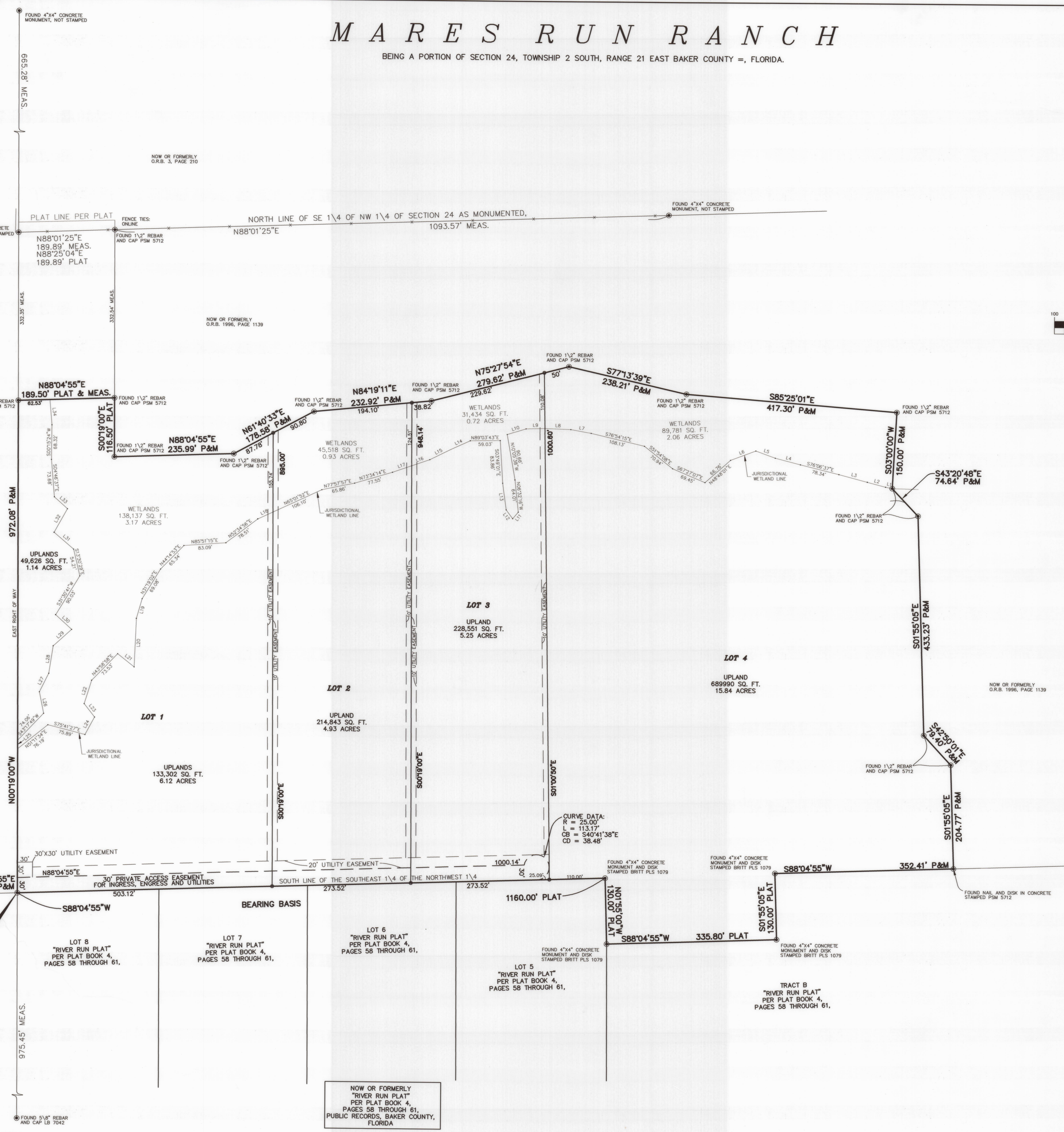
( IN FEET )  
1 inch = 100 ft.

LINE	LENGTH	BEARING
L1	13.58	N78°47'09"W
L2	37.33	N72°39'59"W
L3	58.00	N75°35'11"W
L4	31.37	N75°47'21"W
L5	41.06	N70°13'36"W
L6	53.15	S69°30'29"W
L7	41.02	N79°45'22"W
L8	51.15	N88°54'47"W
L9	37.41	S88°41'51"W
L10	38.70	S72°34'56"W
L11	17.04	S40°56'07"W
L12	21.46	N36°33'24"W
L13	53.28	N07°29'23"W
L14	43.01	S65°18'43"W
L15	45.24	S63°28'12"W
L16	37.95	S70°58'37"W
L17	40.12	S70°58'37"W
L18	33.17	S65°10'32"W
L19	40.12	S36°19'16"W
L20	96.12	S02°10'14"W
L21	43.01	N01°15'55"W
L22	48.67	S16°59'31"W
L23	33.90	S37°52'21"E
L24	38.33	S28°10'06"W
L25	16.45	N80°19'45"W
L26	43.75	N11°27'39"W
L27	41.06	N28°44'45"E
L28	35.03	N08°40'14"E
L29	48.44	N47°58'22"E
L30	43.09	N47°45'35"W
L31	50.95	N48°30'17"W
L32	53.33	N32°27'28"E
L33	35.20	N47°50'23"W
L34	30.20	N04°54'37"W

**POINT OF COMMENCEMENT**  
SOUTHWEST CORNER OF THE SOUTHEAST 1/4 OF THE NORTHWEST 1/4, SECTION 24  
FOUND 4"x4" CONCRETE MONUMENT AND DISK STAMPED BRIT PLS 1079

**POINT OF BEGINNING**  
FOUND 4"x4" CONCRETE MONUMENT AND DISK STAMPED BRIT PLS 1079

COUNTY ROAD NO. 125  
STATE ROAD NO. 125  
100' RIGHT OF WAY



NOW OR FORMERLY  
"RIVER RUN PLAT"  
PER PLAT BOOK 4,  
PAGES 58 THROUGH 61,  
PUBLIC RECORDS, BAKER COUNTY,  
FLORIDA

**LEGEND**

CONC. = CONCRETE	MEAS. = MEASURED	STAMPED BRIT PLS 1079
CONC. CONCRETE PLATHOLE	MEAS. = NATIONAL GEODETIC VERTICAL DATUM	STAMPED BRIT PLS 1079
ASL = AIR CONDITIONER	REC. = OFFICIAL RECORD BOOK	STAMPED BRIT PLS 1079
ASL = ALSO KNOWN AS	P.P.L. = PARCEL IDENTIFICATION NUMBER	STAMPED BRIT PLS 1079
B.L. = BUILDING RESTRICTION LINE	P.P.C. = POINT OF BEGINNING	STAMPED BRIT PLS 1079
CB = CHAIN BEARING	P.P.M. = POINT OF COMMENCEMENT	STAMPED BRIT PLS 1079
CD = CHORD DISTANCE	P.M. = PLAT AND MEASURED	STAMPED BRIT PLS 1079
CE = CHORD BEARING	P.M. = RIGHT-OF-WAY	STAMPED BRIT PLS 1079
CE = CHORD DISTANCE	P.M. = RIGHT-OF-WAY	STAMPED BRIT PLS 1079
CE = CHORD BEARING	P.M. = RIGHT-OF-WAY	STAMPED BRIT PLS 1079
CE = CHORD DISTANCE	P.M. = RIGHT-OF-WAY	STAMPED BRIT PLS 1079
CE = CHORD BEARING	P.M. = RIGHT-OF-WAY	STAMPED BRIT PLS 1079
CE = CHORD DISTANCE	P.M. = RIGHT-OF-WAY	STAMPED BRIT PLS 1079
CE = CHORD BEARING	P.M. = RIGHT-OF-WAY	STAMPED BRIT PLS 1079
CE = CHORD DISTANCE	P.M. = RIGHT-OF-WAY	STAMPED BRIT PLS 1079

**GLASS LAND SURVEYING, LLC**  
GLASS LAND SURVEYING, LLC  
23884 CRESCENT PARK COURT, FERNANDINA BEACH, FLORIDA 32034  
(904) 261-0128 • CELL (904) 370-0318  
LICENSE BUSINESS NO. LB 8359